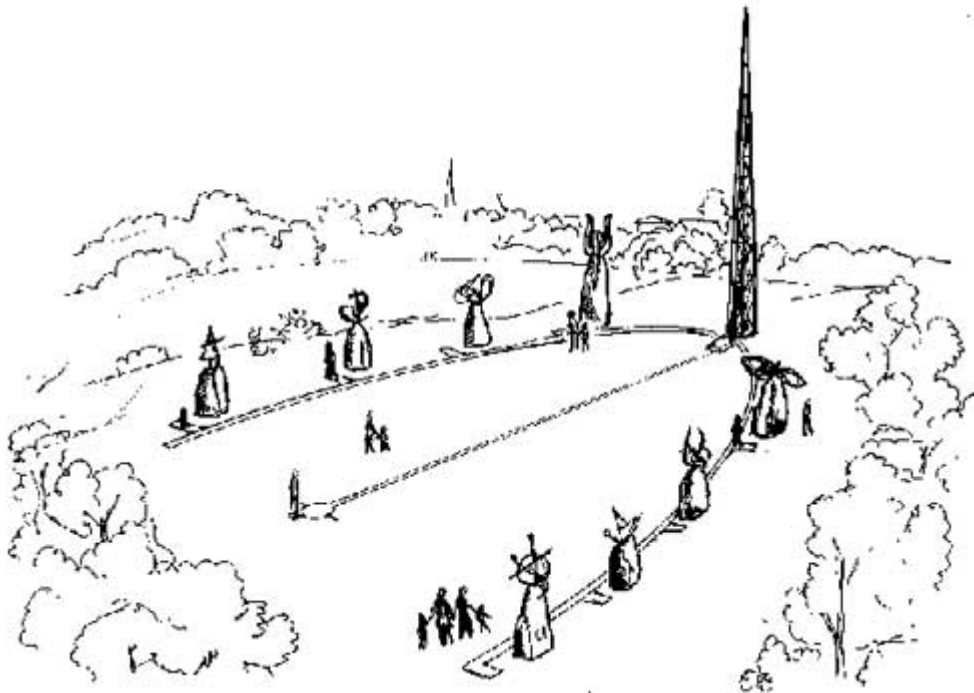


# Request For Quotation

## Installation of six boulders at The Glen

Installation of six boulders as part of the 'Constellations of the South' sculpture project, The Glen, Uralla



Project title: Request for Quotation (RFQ) for the Installation of six boulders as part of the 'Constellations of the South' sculpture project.

Location: The Glen, Uralla

Closing date: 9AM (AEST), Thursday 17-03-2022

Submit Quotations to: [council@uralla.nsw.gov.au](mailto:council@uralla.nsw.gov.au)



## Introduction

Uralla Shire Council is calling for a suitably qualified contractor to undertake the installation of six large boulders at The Glen in Uralla, to enable the 'Constellations of the South' sculpture project.

The Constellations of the South is an art project initiated by the local artist Carl Merten in the early 2000s. The project consists of eight sculptures, of which two have been completed.

For the realisation of the remaining six sculptures, Uralla Shire Council is calling for a suitably qualified contractor to install six large granite boulders at specified locations at the Glen.

## Project background

Uralla Council has been successful in receiving funding from the NSW Government's Public Spaces Legacy Program for upgrading Pioneer Park, Rotary Park and The Glen. At one of the sites, The Glen, the Constellations of the South sculpture project is envisioned.

The project consists of eight sculptures on top of large granite boulders of approximately 2.5 - 4m height and 1 - 1.5m in diameter, of which two have already been completed.



Figure 1. Satellite photo of the site location (The Glen)

## Scope of works

The scope of works for the installation of the six granite boulders includes:

- Removal of vegetation and topsoil at identified locations of the sculptures
- Excavation for footings of boulders and relocate material at agreed location on site
- Assessing centre point of gravity of the boulders and identifying how they can be erected most stably.
- Install the boulders in accordance with the drawings
- Reinstate all impacted surfaces including replacing turf like for like

## Site access

The Glen can be accessed via a 5m wide driveway coming of Barleyfields Rd. At the end of the driveway a maintenance access gate provides access to the site. Uralla Shire Council will provide access.



*Figure 2. The two existing sculptures and the access gate to the site*



*Figure 3. Two of the six boulders to be installed, located near the access gate of the site*



Figure 4. The Southern Cross Sculpture

## Safety

The contractor is responsible for ensuring a safe work environment for their staff and contractors engaged by them. Submission of the following documents will be required:

- Site specific risk assessments
- White Cards for all Staff involved in the project
- SWMS Documents.

## Information to include in your submission

Please include the following in your fee proposal:

- Proposed methodology, including equipment to be used
- Proposed fees, including any assumptions or exclusions
- Hourly rates for key personnel
- Qualifications and experience of the personnel who will deliver the project
- Examples of similar past projects undertaken by the same team
- Referees

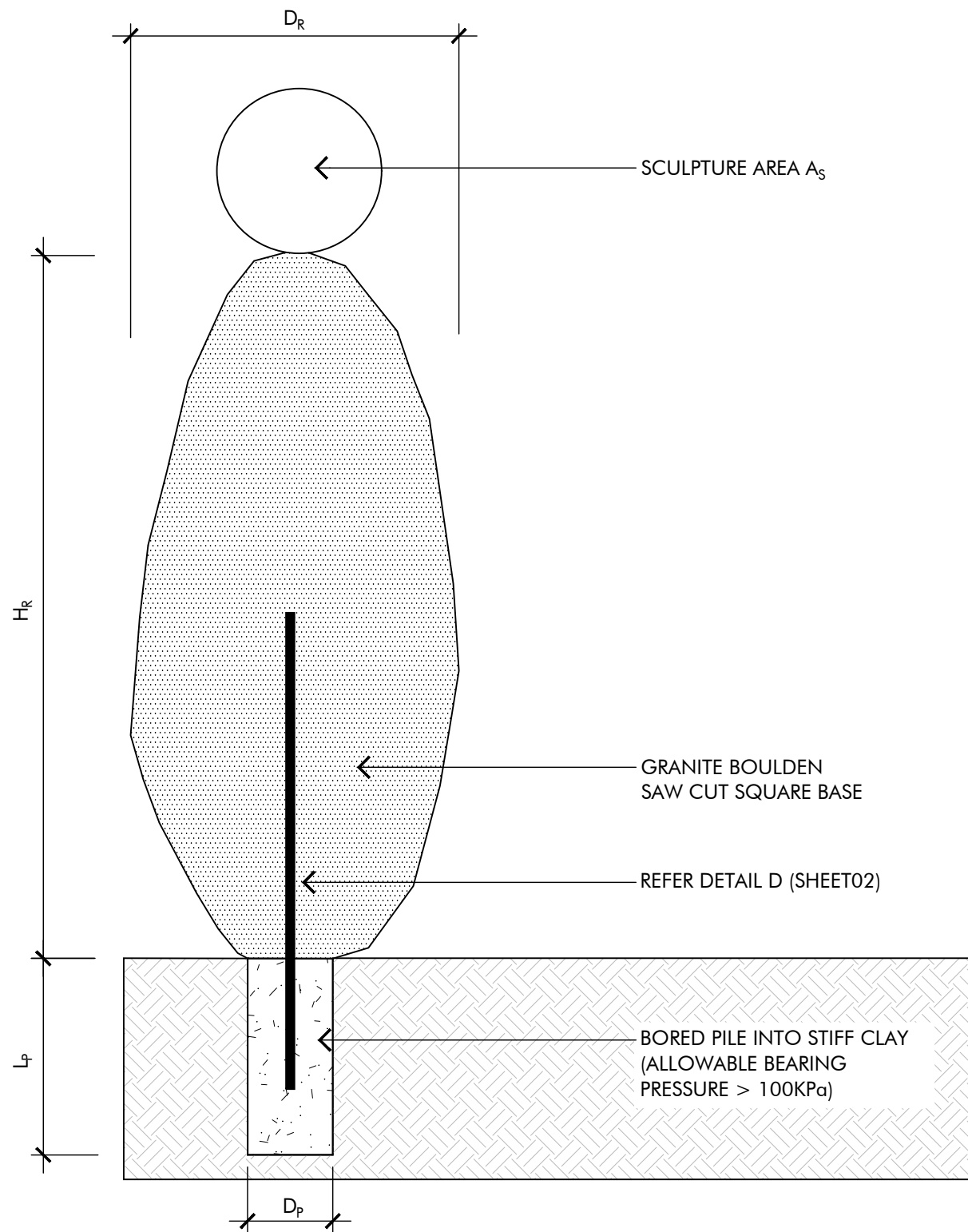
## Insurance requirements

Council will request the successful Consultant to provide the following insurances:

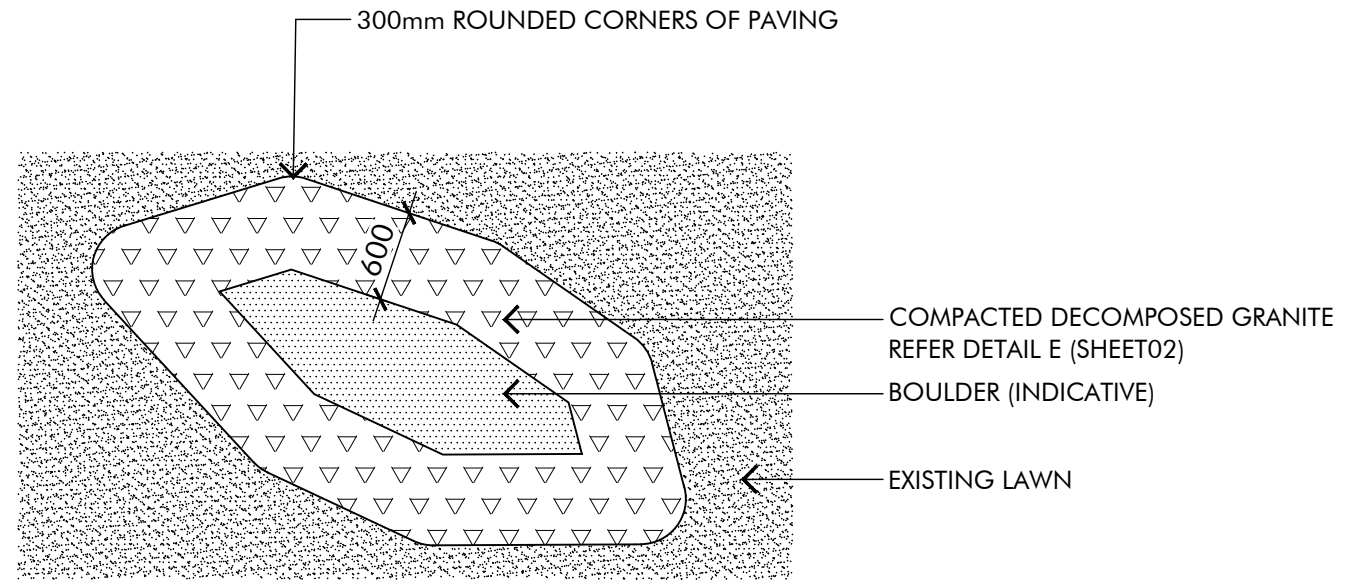
- 1) *Professional liability & Indemnity Insurance not less than \$5M*
- 2) *Public Liability Insurance not less than \$20M*

## Attachments

Refer to attached drawing set for details of installation. (CVLE\_Uralla\_Installation of Boulders\_Details.pdf)



1 SECTION - INSTALLATION OF BOULDERS  
1:20 @ A3

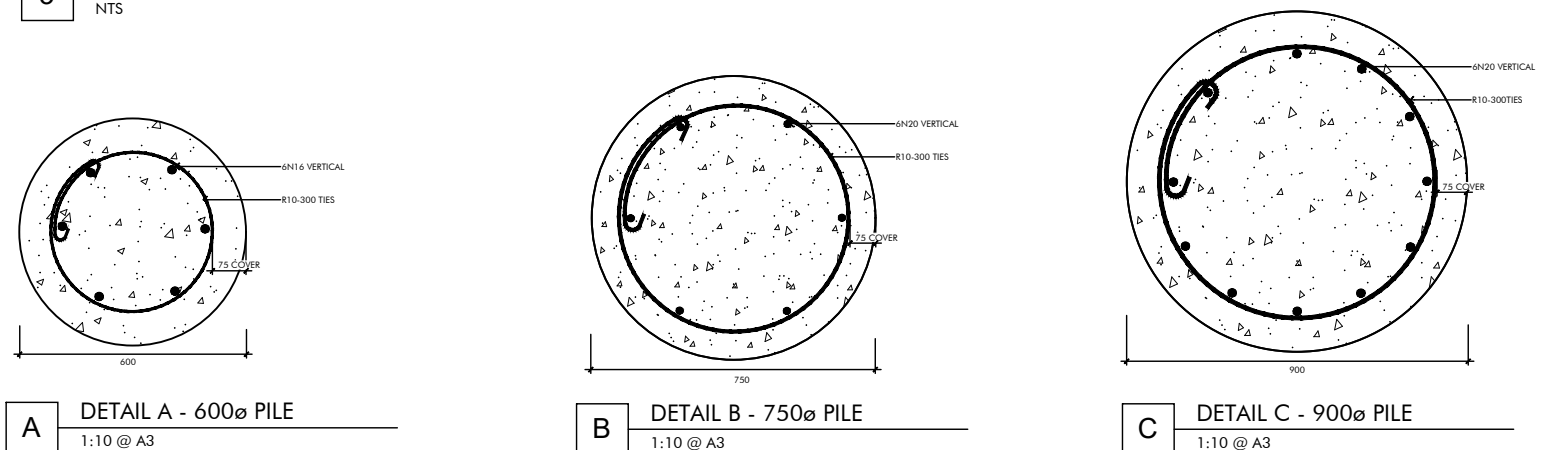


2 PLAN - COMPACTED DECOMPOSED GRANITE PAVING AT BASE OF BOULDERS  
1:50 @ A3

| SCHEDULE |       |       |       |       |                 |          |
|----------|-------|-------|-------|-------|-----------------|----------|
| $D_R$    | $H_R$ | $D_P$ | $L_P$ | $A_S$ | PIER TYPE       |          |
| 1.0      | 2.5   | 0.6   | 2.4   | 1.0   | 600 $\emptyset$ | DETAIL A |
|          | 3.0   | 0.6   | 2.6   | 1.0   | 600 $\emptyset$ | DETAIL A |
|          | 3.5   | 0.6   | 2.8   | 1.0   | 600 $\emptyset$ | DETAIL A |
|          | 4.0   | 0.6   | 3.0   | 1.0   | 600 $\emptyset$ | DETAIL A |
| 1.25     | 2.5   | 0.75  | 2.4   | 1.5   | 750 $\emptyset$ | DETAIL B |
|          | 3.0   | 0.75  | 2.6   | 1.5   | 750 $\emptyset$ | DETAIL B |
|          | 3.5   | 0.75  | 2.8   | 1.5   | 750 $\emptyset$ | DETAIL B |
|          | 4.0   | 0.75  | 3.0   | 1.5   | 750 $\emptyset$ | DETAIL B |
| 1.5      | 2.5   | 0.9   | 2.4   | 2.0   | 900 $\emptyset$ | DETAIL C |
|          | 3.0   | 0.9   | 2.6   | 2.0   | 900 $\emptyset$ | DETAIL C |
|          | 3.5   | 0.9   | 2.8   | 2.0   | 900 $\emptyset$ | DETAIL C |
|          | 4.0   | 0.9   | 3.0   | 2.0   | 900 $\emptyset$ | DETAIL C |

LENGTH OF VERTICAL BARS =  $L_P - 500\text{mm}$

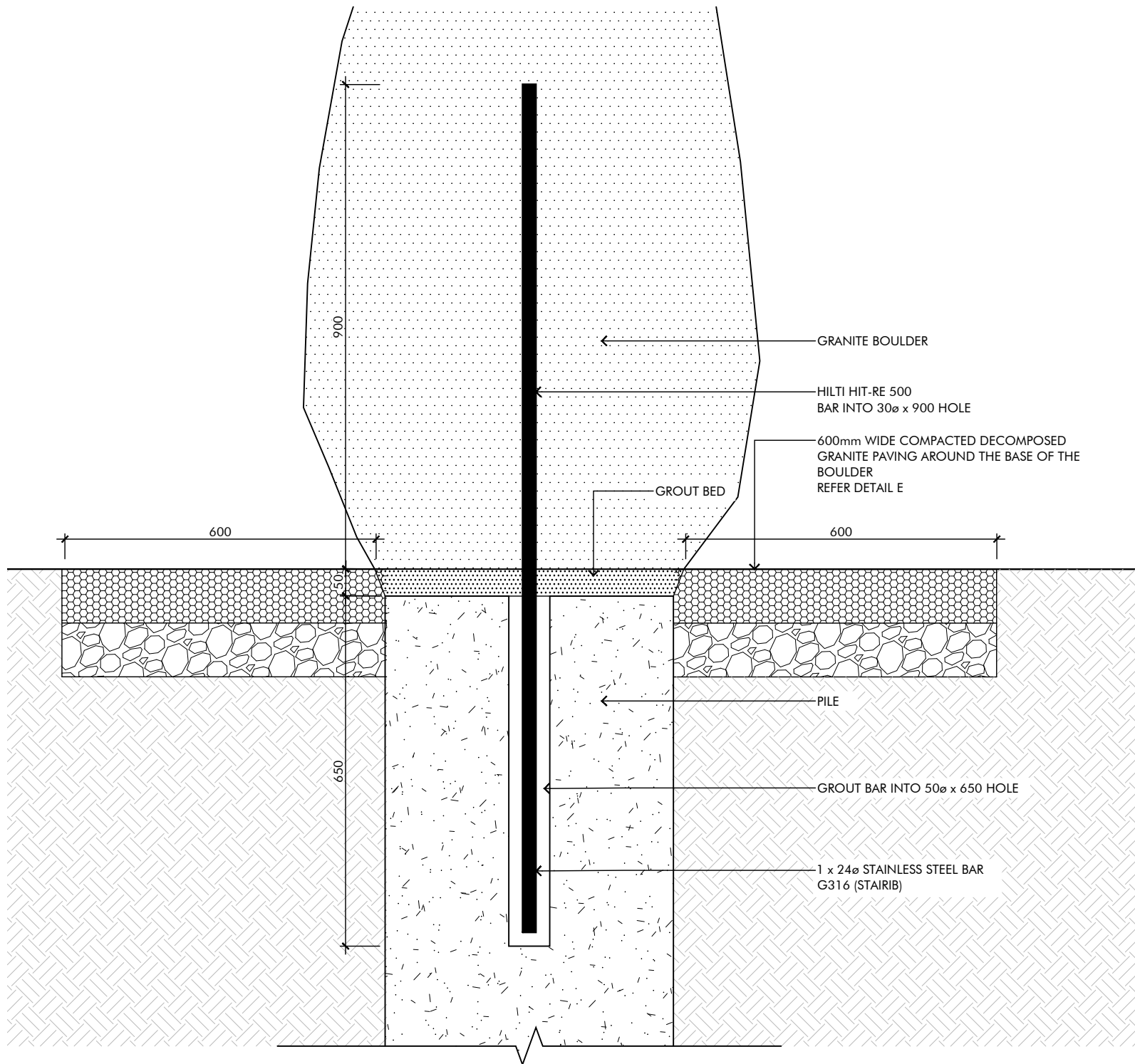
3 PIER SCHEDULE (SCHEDULE DIMENSIONS IN METRES)  
NTS



A DETAIL A - 600 $\emptyset$  PILE  
1:10 @ A3

B DETAIL B - 750 $\emptyset$  PILE  
1:10 @ A3

C DETAIL C - 900 $\emptyset$  PILE  
1:10 @ A3

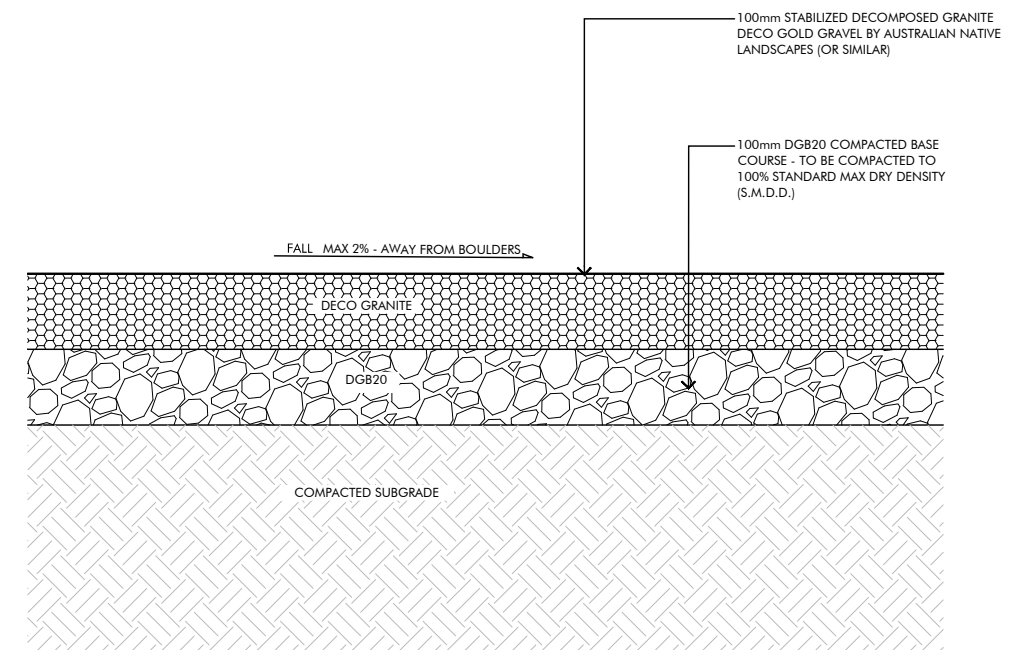


**D** DETAIL D - FIXING DETAIL  
1:10 @ A3

CONSTRUCTION SEQUENCE:

1. DRILL 30 $\phi$  x 900 HOLE IN BOULDER (DO NOT CORE DRILL)
2. CLEAN HOLE & BOND N24 BAR
3. DRILL 50 $\phi$  x 650 HOLE IN PILE (DO NOT CORE DRILL)
4. CLEAN, FLUSH & FILL WITH LIQUID GROUT  
ROD TO EXCLUDE ANY AIR POCKETS
5. LOWER BOULDER, PACK AND BRACE IN POSITION
6. GROUT BETWEEN BOULDER & PILE
7. AFTER 7 DAYS REMOVE PACKERS & COMPLETE GROUTING

ALL GROUT TO BE FOSROC CONSTRUCTION GROUT OR APPROVED EQUIVALENT, WITH A FLOWABLE CONSISTENCY



**E** DETAIL E - COMPACTED DECOMPOSED GRANITE PAVING  
1:10 @ A3